

**KATONA, T. L., KOVÁCS, J., MAGYAR, I., SÜTŐ-SZENTAI, M. & BERTA, T.** 2013. A new occurrence of classic „Árpád-type” mollusk fauna from the Upper Miocene of Kozármisleny, southern Hungary. *Geologia Croatica* **66**(2): 111–118.

MTA–MTM–ELTE Paleo contribution number: 180.

# A new occurrence of a classic “Árpád-type” mollusc fauna from the Upper Miocene of Kozármisleny, southern Hungary



Lajos Tamás Katona<sup>1</sup>, János Kovács<sup>2</sup>, Imre Magyar<sup>3</sup>, Mária Sütő-Szentai<sup>4</sup> and Tibor Berta<sup>5</sup>

<sup>1</sup> Natural History Museum of Bakony Mountains, H-8420 Zirc, Rákóczi tér 3-5, Hungary; (finci99@freemail.hu)

<sup>2</sup> Department of Geology, University of Pécs, H-7624 Pécs, Ifjúság str. 6, Hungary; Environmental Analytical & Geoanalytical Research Group, Szentágothai Research Centre, University of Pécs, H-7624 Pécs, Ifjúság str. 20, Hungary; (jones@gamma.ttk.pte.hu)

<sup>3</sup> Research Group for Paleontology, Hungarian Academy of Sciences-Hungarian Natural History Museum-Eötvös University, POB 137, H-1431 Budapest, Hungary; (immagyar@mol.hu)

<sup>4</sup> H-7300 Komlói, Május 1. u. 7, Hungary; (szentai.maria@gmail.com)

<sup>5</sup> H-8200 Veszprém, Sólyi u. 2, Hungary

doi: 10.4154/gc.2013.08

## Geologia Croatica

### ABSTRACT

A classic but very rare “Árpád-type” mollusc assemblage, representing the endemic fauna of the Late Miocene–Early Pliocene Lake Pannon, was discovered in Kozármisleny (near Pécs, southern Hungary). The fossils were collected from silt layers deposited in the shallow sublittoral zone of Lake Pannon, exposed in an 8–10 m high road cut. The assemblage contained some very rare species, including the type species of the genus *Lymnocardium*, *L. haueri* (M. HÖRNES). Palynological investigations from the same layers failed to yield age-diagnostic dinoflagellates, and pointed to a brackish – freshwater depositional environment and warm temperate climate.

**Keywords:** Pannonian Basin, Lake Pannon, molluscs, palynomorphs, granulometry

### 1. INTRODUCTION

Much of the sedimentary fill of the Neogene Pannonian Basin System was deposited in the Late Miocene – Early Pliocene Lake Pannon, a large, long-lived, brackish lake populated by a highly endemic “Ponto-Caspian-type” biota. In particular, cardiid bivalves reflect the extraordinary diversity with more than 200 species in the lake (MÜLLER et al., 1999; GEARY et al., 2000). Whereas high diversity in some other groups, such as the gastropods, was achieved by a combined effect of in situ evolution and inheritance from Early – Middle Miocene lakes (HARZHAUSER & MANDIC, 2008), Lake Pannon cardiids probably all originated from ancestors living in the restricted marine environment of the Middle Miocene Sarmatian sea (e.g. VRSALJKO,

1999). Historically, the first significant endemic cockle assemblage from the lake was described by HÖRNES (1862) from the village of Árpád (today part of Pécs), southern Hungary. Later these cardiids played an outstanding role in the classification of Miocene and Pliocene brackish cockles of the entire Paratethyan region. Although similar faunas are well-known from the southern regions of the Pannonian Basin, especially in Croatia (e.g. BRUSINA, 1884; BASCH, 1990), some of the Árpád species are very rare elsewhere. For example, the type species of the genus *Lymnocardium*, *L. haueri*, has not been known to occur in any other locality (reports on *L. haueri* from Serbia (STEVANOVIC, 1951) and Croatia (BASCH, 1990) refer to a morphologically clearly distinct form, probably another species).

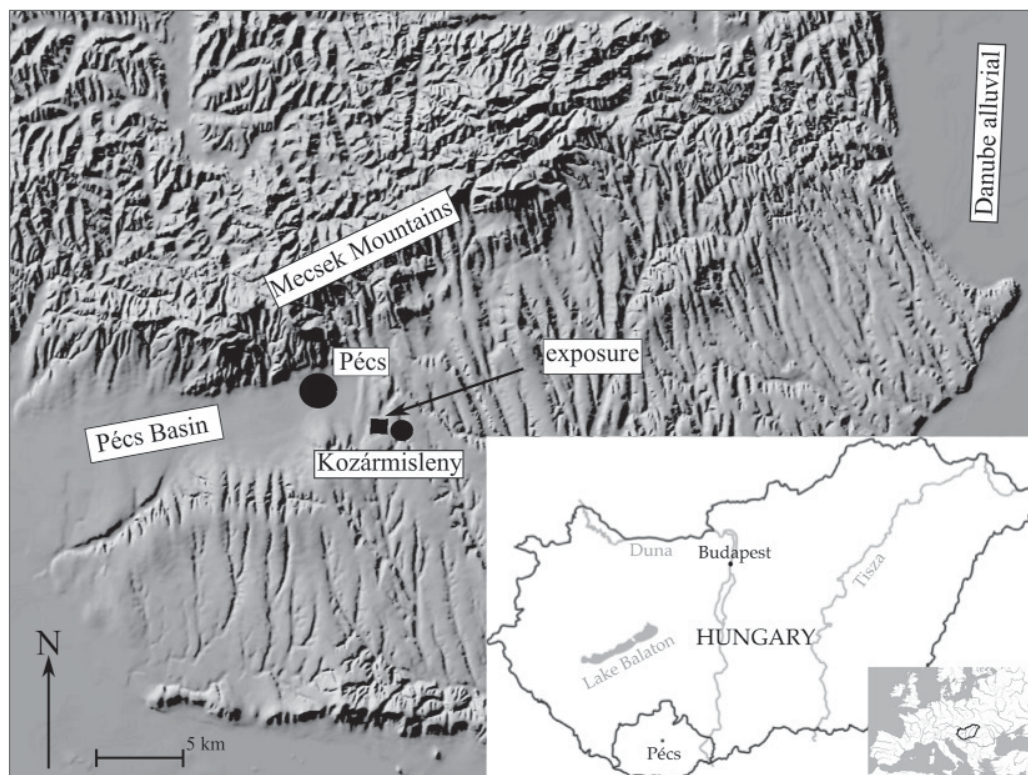


Figure 1: Geographic position of the Kozármisleny profile.

The original descriptions by HÖRNES (1862) were based on donated specimens, and the exact locality where the shells had been collected remained unknown. Recently SZÓNOKY et al., (1999) measured a fossiliferous outcrop located immediately south of Árpád. Some 2.5 km NE of their locality, in the area of the village of Kozármisleny, a road cut was deepened in 2008 as part of the construction of the M6 highway system, exposing fossiliferous silt layers deposited in Lake Pannon. When visiting the outcrop, we were allowed only a restricted time for scanning the sequence and collecting samples. The mollusc fauna of the outcrop, however, proved to be very remarkable. The 10 bivalve (including 8 cardiid) and 4 gastropod species correspond to the classic Árpád fauna, containing the same morphological types and including some of the rarities (*L. haueri*, *L. hungaricum*, *L. arpadense*, *Pteradacna pterophora*). This paper gives a brief account of the outcrop and its mollusc fauna, complete with the results of palynological investigations.

## 2. THE KOZÁRMISLENY OUTCROP

The excavation site (46°05'N and 18°27'E) is located in the Pécás Basin, between the villages of Kozármisleny and Árpád (Nagyárpád, today part of Pécás) in southern Hungary (Fig. 1), at an elevation of 160 m above sea level. The Pécás Basin is filled with lacustrine, fluvio-lacustrine, and aeolian deposits of Miocene to Pleistocene age. In the southern margin of the basin, the layers dip approximately 1–3° to the south-southeast (SEBE et al., 2008).

The north to south oriented road cut exposed the deposits of Lake Pannon in an 8–10 m thick sequence below a thin

Pleistocene loess cover. The section is composed primarily of yellowish-gray, medium- to coarse-grained silt, with 20–30 cm thick intercalations of fine-grained silt. Layers of both the eastern (A) and western (B) walls were numbered from bottom to top.

Layers of wall A (Fig. 2) were continuously sampled at 10–20 cm intervals for laser diffraction grain-size analysis (Fritsch Analysette 22), following the approach of KONERT & VANDENBERGHE (1997) and KOVÁCS (2008). The gray-coloured, fine silt layers were laminated. Between the lamina, magnesium-oxide films occurred. The yellowish-gray, medium- to coarse-grained silt layers showed cross to wavy lamination. The medium- and fine-grained silts were very poorly-sorted, strongly positively skewed, and extremely leptokurtic (Fig. 2, A2, 3, 5, 7, 9). Their grain-size frequency curves were unimodal (Fig. 3.). The coarse silts were also very poorly-sorted, strongly positively skewed, and extremely leptokurtic, but the grain-size frequency distributions tended to exhibit a weakly-developed bimodality (Fig. 2., A1, 4, 6, 8, 10 and Fig. 3.). The grain size parameters and the bimodality of the central parts of the frequency distributions (Fig. 3.) indicate a shallow sublittoral depositional environment with occasionally significant effects of wave action, characteristic of both marine (GOLDBERY, 1980; TAMURA, 2004; BARUSSEAU, 2011) and lacustrine (XIAO et al., 2012) environments.

Most of the layers seemed to be barren of molluscan fossils or contained only shell fragments, but silt layers A1 to A3 and a very-fine, yellow sand layer at the bottom of wall B (B1) contained abundant and well-preserved shells.

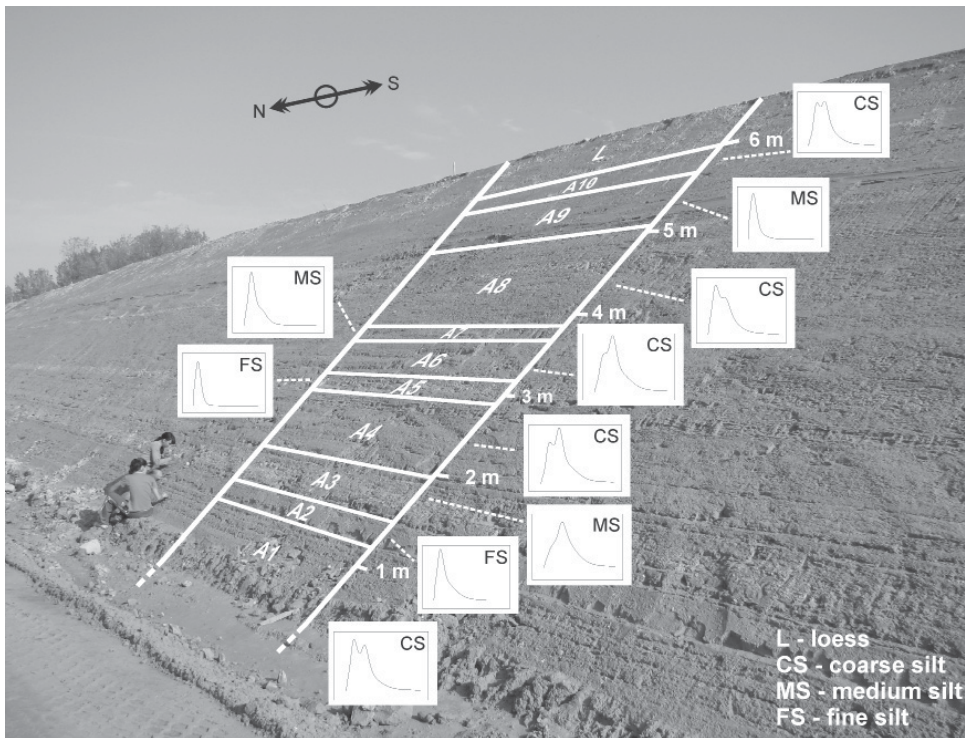


Figure 2: The Kozármisleny road cut (wall A) with grain-size distribution curves of the Upper Miocene layers.

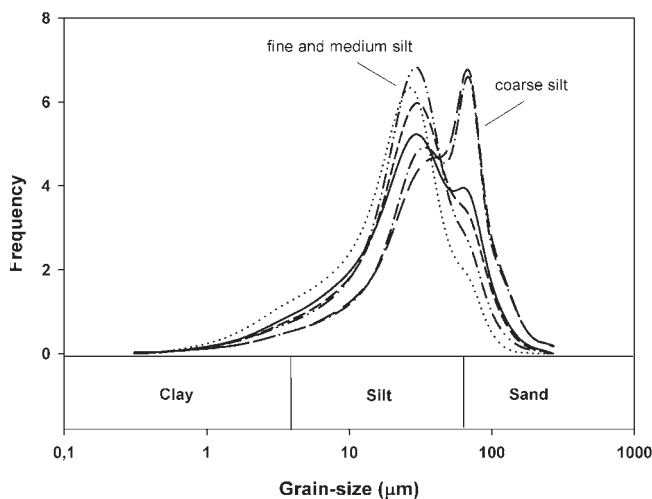


Figure 3: Grain-size spectra of samples from different layers in wall A.

### 3. MOLLUSCS

Apart from the fossiliferous layers A1 to A3 and B1, mollusc shells were also collected from debris at the foot of the walls. The following forms were identified:

*Congeria rhomboidea rhomboidea* HÖRNES, 1862 (Fig. 4d). Well-preserved specimens, 5–7 cm in length and 4–5 cm wide, occurred in layers A1 to A3. Several dozen specimens were collected, some with articulated valves, some as single valves.

*Dreissenomya unionides* FUCHS, 1870 (Fig. 4h). A single specimen was discovered, 4 cm long and 2.5 cm wide.

*Lymnocardium arpádense* (HÖRNES, 1862) (Fig. 4j). A mass occurrence of single and articulated valves, ca. 3 cm in length and 2 cm in width, occurred in layer B1.

*Lymnocardium haueri* (HÖRNES, 1862) (Fig. 4i). 3 specimens (length 4–4.5 cm, width 4 cm) were collected from layer B1.

*Lymnocardium hungaricum* (HÖRNES, 1862) (Fig. 4e). Three almost intact specimens and several broken ones and fragments were observed, mostly in layer A3. The valves are 7–9 cm long and 6–7 cm wide.

*Lymnocardium majeri* (HÖRNES, 1862) (Fig. 4k). A large number of excellently preserved specimens were collected from layers A2 and B1, with an average size of 3 cm length and 2.5 cm width.

*Lymnocardium rogenhoferi* (BRUSINA, 1884) (Fig. 4m). Four specimens, all belonging to the Árpád morphotype, were recovered from layer A2. None of the valves exceeded 2 cm in length.

*Lymnocardium schmidtii* (HÖRNES, 1862) (Fig. 4f). Three specimens, 3–7 cm in length and 3–6 cm in width, were discovered in layer A3.

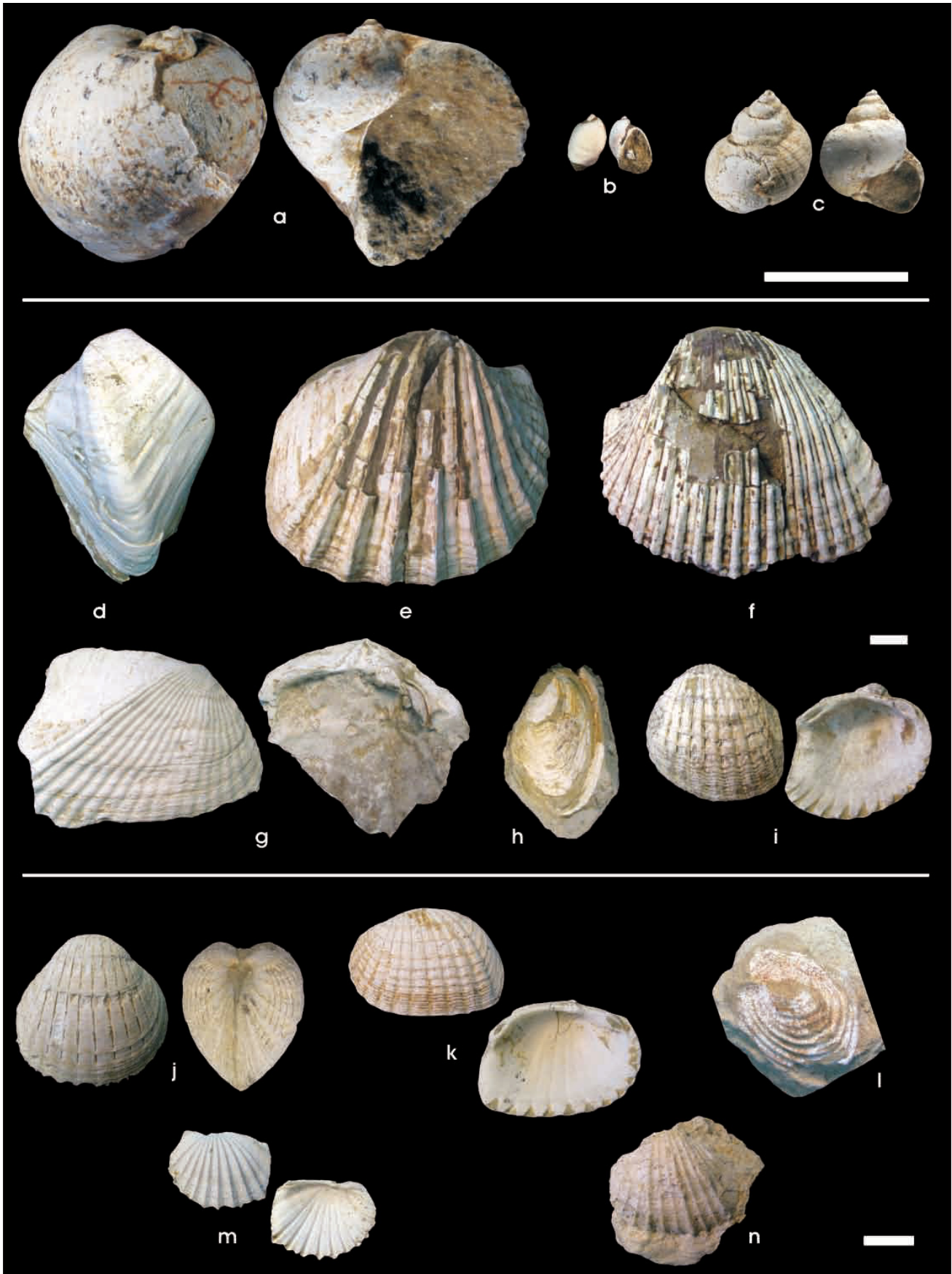
*Caladacna steindachneri* (BRUSINA, 1884) (Fig. 4n). Two internal moulds (steinkern) were collected from layer A2.

*Pteradacna pterophora* (BRUSINA, 1884) (Fig. 4g). Three partial specimens were collected from debris.

*Radix kobelti* (BRUSINA, 1884) (Fig. 4a). One specimen was observed in layer A1.

*Radix lytostomopsis* (BRUSINA, 1902) (Fig. 4b). One specimen occurred in layer A1.

*Zagrabica cyclostomopsis* BRUSINA, 1884 (Fig. 4c). 3 specimens were discovered, with an average size of 0.9 cm height and 0.6 cm width, in layer A1.



**Figure 4:** Molluscs from the Kozármisleny profile. a: *Radix kobelti*, b: *Radix lytostomopsis*, c: *Zagrabica cyclostomopsis*, d: *Congeria rhomboidea rhomboidea*, e: *Lymnocardium hungaricum*, f: *Lymnocardium schmidti*, g: *Pteradacna pterophora*, h: *Dreissenomya unionides*, i: *Lymnocardium haueri*, j: *Lymnocardium arpadense*, k: *Lymnocardium majeri*, l: *Valenciennius reussi*, m: *Lymnocardium rogenhoferi*, n: *Caladacna steindachneri*. Scale bar: 2 cm for a–c, 1 cm for d–n.

*Valenciennius reussi* (NEUMAYR, 1875) (Fig. 4l). Two specimens were collected from layer A1.

#### 4. PALYNOLOGICAL INVESTIGATIONS

Three samples from layer A1 were collected for palynological analysis. The objective was to better assess the biodiversity in this environment, and to provide data for biostratigraphic and environmental interpretation.

Palynological samples were prepared using standard processing techniques at the Laboratory of the Hungarian Geological Institute. The samples were treated with HCl (36%) and HF (40%) to remove the mineral fraction, and a heavy liquid (ZnCl<sub>2</sub>, density 2.2 g/cm<sup>3</sup>) was used to separate the organic matter from the undissolved inorganic components. The organic residue was not sieved, and additional oxidation was unnecessary. Organic residue was mounted in glycerine jelly and three slides were investigated. Two dinocyst taxa, three fresh water algae and 18 sporomorph taxa were identified.

##### 4.1. Dinoflagellates

The dinoflagellate assemblage consisted of two forms: cf. *Batiacasphaera* sp. DRUGG 1970, 12 specimens (Fig. 5, 4), and *Gonyaulacaceae* sp. indet. LINDEMANN 1928, only one specimen (Fig. 5, 7).

The *Batiacasphaera*-like dinocyst of layer A1 is poorly preserved. It is similar to those forms that occur elsewhere in the *Galeacysta etrusca* Zone, (younger than 8 Ma) in having an intercalary archeopyle and punctated ornamentation, but differs from them in its habit and glassy appearance. *Gonyaulacaceae* sp. indet. is well-preserved. A reworked origin for this specimen can be excluded. It resembles some well-known dinoflagellates from the *Galeacysta etrusca* Zone (*Gonyaulax spinifera* – *G. digitalis*), but its tabulation is not identical with them.

Neither form is suitable for a more precise biostratigraphic evaluation. Their presence indicates a probable brackish environment.

##### 4.2. Chlorophyta

The samples contained *Botryococcus braunii* KÜTZING 1849, a green alga common in both brackish and freshwater ecosystems worldwide. *Mougeotia laetevirens* (A. Braun) WITTROCK 1877 and a freshwater *Spirogyra* sp. indicate the presence or proximity of a freshwater environment.

##### 4.3. Sporomorphs

The following forms were identified:

*Abiespollenites latisaccatus* (TREVISAN 1967) KRUTZSCH 1971 (Fig. 5, 6)

*Abiespollenites maximus* (KRUTZSCH 1971) NAGY, 1985

*Abiespollenites sivaki* NAGY, 1985 (Fig. 5, 8)

*Abietinaepollenites microalatus* (R. POTONIÉ, 1932) R. POTONIÉ, 1951

*Alnipollenites verus* R. POTONIÉ, 1934

*Betulaepollenites betuloides* (PFLUG, 1953) NAGY, 1969

*Cedripites crassiundulicristatus* (TREVISAN, 1967) KRUTZSCH, 1971 (Fig. 5, 1–3)

*Cedripites dacrydioides* KRUTZSCH, 1971

*Chenopodipollenites multiplex* (WEYLAND & PFLUG, 1957) KRUTZSCH, 1960

*Ericipites callidus* (R. POTONIÉ, 1931) KRUTZSCH, 1970

*Hydrosporites levis* KRUTZSCH, 1962

*Nymphaeaepollenites pannonicus* NAGY, 1969

*Piceapollenites neogenicus* (NAGY, 1969) KRUTZSCH, 1971

*Pinuspollenites labdacus* (R. POTONIÉ, 1932) R. POTONIÉ, 1958

*Plantaginacearumpollenites miocaenicus* NAGY, 1963

*Polypodiisporites favus* (R. POTONIÉ, 1931) R. POTONIÉ, 1933

*Tsugaepollenites verrucatus* (KRUTZSCH, 1971) NAGY, 1985 (Fig. 5, 5)

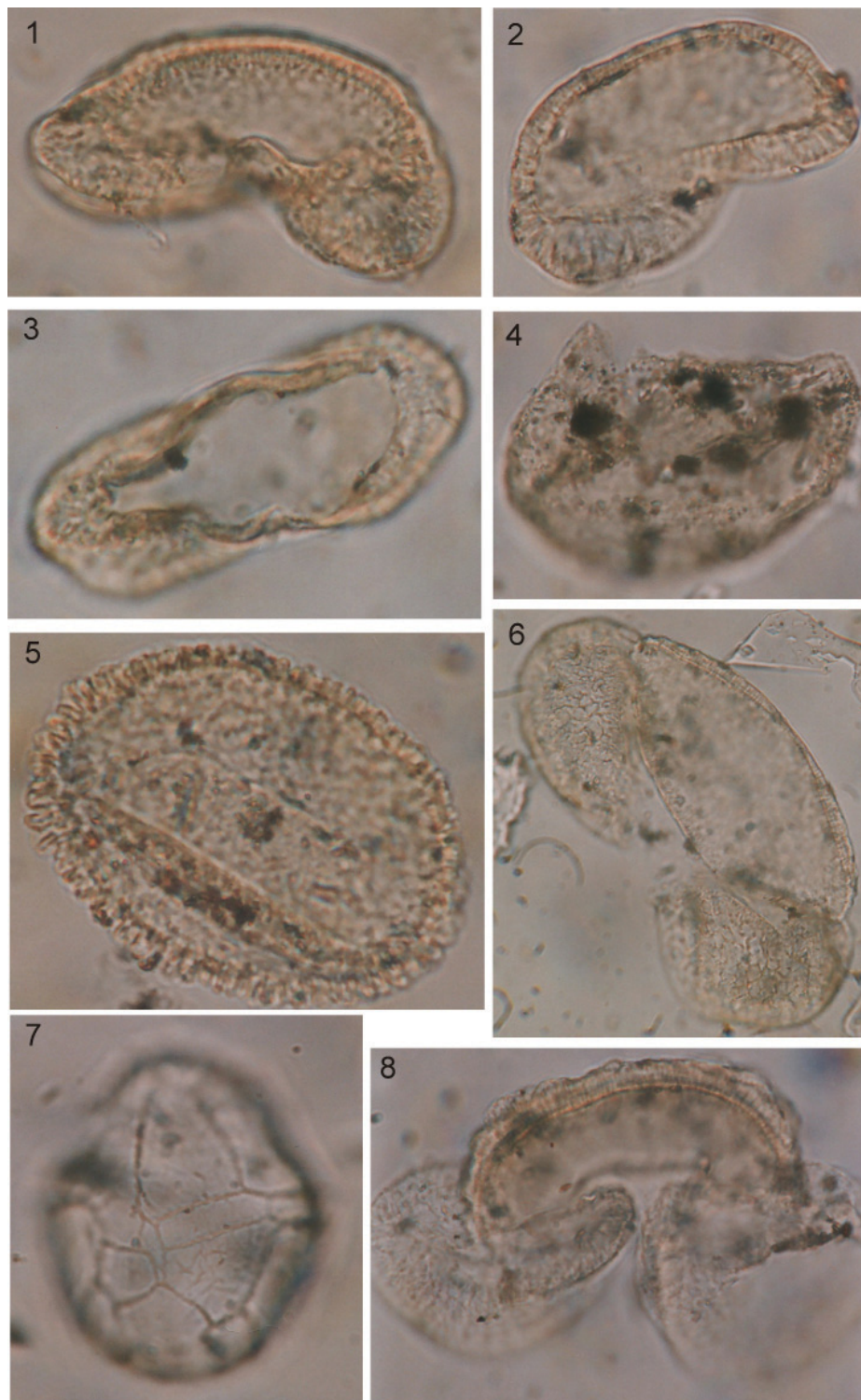
*Ulmipollenites undulosus* WOLFF, 1934

The coniferous species with abundant fir (*Abiespollenites*), pine (*Pinuspollenites*), cedar (*Cedripites*) and less spruce (*Piceapollenites*) reflect the composition of a distant mountainous vegetation. The broad-leaved forms are represented by birch (*Betulapollenites*) and elm (*Ulmipollenites*), the ferns are represented by *Polypodiisporites* and *Laevigatosporites*. Alder (*Alnipollenites*) probably occurred at the lake shore and in marshes. Grasses barely appeared in the samples. The aquatic vegetation is represented by floating ferns (*Hydrosporites*) and water lilies (*Nymphaeaepollenites*).

This pollen spectrum can be readily compared to those of other Late Miocene and Early Pliocene samples from the Transdanubian region of Hungary, such as those in drill cores from Lake Balaton (NAGY-BODOR, 1988) and from the borehole Pula-3 (NAGY, 2005), respectively. In spite of all the similarities, the Kozármisleny samples contain less broad-leaved species and fewer grasses than the two other spectra, and indicate a relatively humid, warm temperate climate.

#### 5. DISCUSSION AND CONCLUSIONS

As indicated by grain size and sedimentary structures, the silt layers of the Kozármisleny outcrop were deposited in the shallow sublittoral zone of Lake Pannon. The ecological demand of molluscs supports this interpretation. *L. majeri*, *L. rogenhoferi*, *Pteradacna pterophora*, and *Valenciennius* are known to have been sublittoral dwellers. *L. arpadense*, similarly to its ancestor *L. diprosopum*, however, usually occurs in littoral sands (GEARY et al., 2010). At the time of deposition, the lake shore was situated a couple of kilometres to the northwest, possibly in the Mecsek Mountains. Recently SEBE et al., (2013) described the occurrence of a wave-cut



**Figure 5:** Pollen and algae from layer A1. 1–3: *Cedripites crassiundulicristatus* (TREVISAN, 1967) KRUTZSCH, 1971 (55–56  $\mu\text{m}$ ); 4: cf. *Batiacasphaera* sp. (DRUGG, 1970) (56  $\mu\text{m}$ ); 5: *Tsugaepollenites verrucatus* (KRUTZSCH, 1971) NAGY, 1985 (54  $\mu\text{m}$ ); 6: *Abiespollenites latisaccatus* (TREVISAN, 1967) KRUTZSCH, 1971 (133  $\mu\text{m}$ ); 7: *Gonyaulacaceae* sp. LINDEMANN, 1928 (46 $\times$ 39  $\mu\text{m}$ ); 8: *Abiespollenites sivaki* NAGY, 1985 (94  $\mu\text{m}$ ).

platform, together with the mollusc *Dreissenomya unioides*, a burrowing dreissenid (also present in the Kozármisleny fauna), from the southern slope of the Mecsek Mountains, at 380 m above sea level.

The diverse cardiid assemblage seems to indicate brackish water, whereas the algae and sporomorphs argue for a brackish to freshwater environment. Spores and pollen indicate a warm temperate climate.

The palynological investigations failed to identify age-diagnostic dinoflagellates. The great similarity of the mollusc fauna to the classic Árpád one however, allows inference of the *Prosodacnomya vutskitsi* Zone (7–5 Ma). Although the Árpád outcrop displays more sand layers, the close proximity and identical fauna suggests that the two outcrops, Árpád and Kozármisleny, expose the same sedimentary rock body.

## ACKNOWLEDGMENT

The authors thank Krisztina SEBE, Viktória BARANYI, and two anonymous reviewers for their comments on the earlier version of the manuscript. The Geological Institute of Hungary, and personally director László KORDOS, is thanked for having the palynological preparations processed. The authors thank the Department of Physical and Applied Geology, Eötvös University, Budapest and the Natural History Museum of Bakony Mountains, Zirc, for their support. Sedimentological analyses were carried out in the Department of Geology, University of Pécs. This contribution was made possible through financial support by the Miksa Hantken Foundation, and Developing Competitiveness of Universities in the South Transdanubian Region (SROP-4.2.1.B-10/2/KONV-2010-0002). This is MTA-MTM-ELTE Paleo contribution No. 180.

## REFERENCES

- BARUSSEAU, J.P. (2011): Influence of mixtures of grain-size populations on the parametric and modal characteristics of coastal sands (Hérault, Mediterranean Sea, France).— *J. Sediment. Res.*, 81, 611–629. doi: 10.2110/jsr.2011.46
- BASCH, O. (1990): Cardiidae (Mollusca, Lamellibranchiata) pontskog kata u Hrvatskoj.— *Palaeontol. Jugoslavica*, 39, 1–158.
- BRUSINA, S. (1884): Die Fauna der Congerienschichten von Agram in Kroatien.— *Beiträge zur Geologie und Paläontologie Österreich-Ungarns und Orients*, 3, 125–187.
- DRUGG, W.S. (1970): Some new genera, species and combinations of phytoplankton from the Lower Tertiary of the Gulf Coast, U.S.A.— *Proc. North Am. Paleont. Convention*, part G, 809–843.
- FUCHS, T. (1870): Beiträge zur Kenntnis fossiler Binnenfaunen III. Die Fauna der Congerienschichten von Radmanest im Banate.— *Jahrbuch der k.k. geologischen Reichsanstalt*, 20, 343–364.
- GEARY, D.H., HUNT, G., MAGYAR, I. & SCHREIBER, H. (2010): The paradox of gradualism: phyletic evolution in two lineages of lymnocyprid bivalves (Lake Pannon, central Europe).— *Paleobiology*, 36, 592–614. doi: 10.1666/08065.1
- GEARY, D.H., MAGYAR, I. & MÜLLER, P. (2000): Ancient Lake Pannon and its Endemic Molluscan Fauna (Central Europe; Mio-Pliocene).— In: ROSSITER, A. & KAWANABE, H. (eds.): *Ancient Lakes: Biodiversity, Ecology, and Evolution*. *Advances in Ecological Research*, 3, 463–482.
- GOLDBERY, R. (1980): Use of grain-size frequency data to interpret the depositional environment of the Pliocene Pleshet Formation, Beer Sheva, Israel.— *J. Sediment. Res.*, 50, 843–856. doi:10.1306/212F7B08-2B24-11D7-8648000102C1865D
- HARZHAUSER, M. & MANDIC, O. (2008) Neogene lake systems of Central and South-Eastern Europe: Faunal diversity, gradients and interrelations.— *Palaeogeography, Palaeoclimatology, Palaeoecology*, 260, 417–434.
- HÖRNES, M. (1862): Die fossilen Mollusken des tertiären Beckens von Wien.— *Conchifera (Acephala)*, 2, 1–479.
- KONERT, M. & VANDENBERGHE, J. (1997): Comparison of laser grain-size analysis with pipette and sieve analysis, a solution for the underestimation of the clay fraction.— *Sedimentology*, 44, 523–535. doi: 10.1046/j.1365-3091.1997.d01-38.x
- KOVÁCS, J. (2008): Grain-size analysis of the Neogene red clay formation in the Pannonian Basin.— *Int. J. Earth Sci.*, 97, 171–178. doi: 10.1007/s00531-006-0150-2
- KRUTZSCH, W. (1962): Atlas der mittel- und Jungtertiären dispersen Sporen- und Pollen- sowie der Mikroplanktonformen des nördlichen Mitteleuropas Lieferung I.—VEB Deutscher Verlag der Wissenschaften, Berlin, 108 p.
- KRUTZSCH, W. (1970): Atlas der mittel- und Jungtertiären dispersen Sporen- und Pollen- sowie der Mikroplanktonformen des nördlichen Mitteleuropas Lieferung VII.—VEB Gustav Fischer Verlag, Jena, 175 p.
- KRUTZSCH, W. (1971): Atlas der mittel- und Jungtertiären dispersen Sporen- und Pollen- sowie der Mikroplanktonformen des nördlichen Mitteleuropas Lieferung VI.—VEB Gustav Fischer Verlag, Jena, 234 p.
- KÜTZING, F.T. (1849): *Species Algarum*.— F.A. Brockhaus, Lipsiae, 922 p.
- LINDEMANN, E. (1928): Abteilung Peridineae (Dinoflagellatae).— In: ENGLER, A. & PRANTL, K. (eds.): *Die Natürlichen Pflanzenfamilien nebst ihren Gattungen und wichtigeren Arten insbesondere den Nutzpflanzen*. Zweite stark vermehrte und verbesserte Auflage herausgegeben von A. Engler, 2 Band, 3–104.
- MÜLLER, P., GEARY, D.H. & MAGYAR, I. (1999): The endemic molluscs of the Late Miocene Lake Pannon: their origin, evolution, and family-level taxonomy.— *Lethaia*, 32, 47–60. doi: 10.1111/j.1502-3931.1999.tb00580.x
- NAGY, E. (1963): Some new Spore and Pollen species from the Neogene of the Mecsek Mountains.— *Acta Botanica*, 34, 387–407.
- NAGY, E. (1969): Palynological elaborations the Miocene layers of the Mecsek Mountains.— *Annales Instituti Geologici Publici Hungarici*, 52, 237–649.
- NAGY, E. (1985): Sporomorphs of the Neogene in Hungary.— *Geol. Hungarica Ser. Palaeontol.*, 47, 1–235.
- NAGY, E. (2005): Palynological evidence for Neogene climatic change in Hungary. — *Occasional Papers of the Geological Institute of Hungary*, 205, 1–120.
- NAGY-BODOR, E. (1988): Palynological study of Pannonian and Holocene deposits from Lake Balaton.— *Annual Report of the Hungarian Geological Institute of 1988*, 535–568.
- NEUMAYR, M. & PAUL, C.M. (1875): Congerien- und Paludinen-schichten Slavoniens und deren Faunen. Ein Beitrag zur Descendenz-Theorie.— *Abhandlungen der kaiserlich-königlichen geologischen Reichsanstalt*, 7, 1–111.
- PFLUG, H.D. (1953): Zur Entstehung und Entwicklung des angiospermiden Pollens in der Erdgeschichte.— *Palaeontographica B*, 95, 60–171.
- POTONIÉ, R. (1931): Pollenformen der Miozänen Braunkohlen.— *Sitzber. Gesellsch. Nat. Freunde Berlin*, 13, 24–26.
- POTONIÉ, R. (1932): Pollenformen aus tertiären Braunkohlen.— *Jahrbuch Preuss. Geol. L. A.*, Vol. 52, 1–7.
- POTONIÉ, R. (1933): Über die Morphologie der Fossilen Pollen.— *Sitzber. ges. naturf. Fr., Berlin*, 516 p.
- POTONIÉ, R. (1958): Synopsis der Gattungen der Sporae dispersae I–VI. Synopsis II Teil: Sporites (Nachträge), Saccites, Aletes, praecolpates, Polycolpates, Monocolpates.— *Beich. Geol. Jb.*, 31, 1–114.
- SEBE, K., CSILLAG, G. & KONRÁD, G. (2008): The role of neotectonics in fluvial landscape development in the Western Mecsek Mountains and related foreland basins (SE Transdanubia, Hungary).— *Geomorphology*, 102, 55–67. doi: 10.1016/j.geomorph.2007.05.018
- SEBE, K., KONRÁD, G. & MAGYAR, I. (2013): On the position and age of the highest-lying Lake Pannon deposits in the Mecsek Mts. (SW Hungary).— *Földt. Közl.*, 143, 445–468.
- STEVANOVIĆ, P.M. (1951): Pontische Stufe im engeren Sinne – obere Congerienschichten Serbiens und der angrenzenden Gebiete. Serbische Akademie der Wissenschaften, Sonderausgabe 187, Mathematisch-Naturwissenschaftliche Klasse No. 2, Beograd. 361 p.
- SZÓNOKY, M., DOBOS-HORTOBÁGYI, E., GULYÁS, S., MÜLLER, P., SZUROMI-KORECZ, A., GEARY, D.H. & MAGYAR, I. (1999): Árpád, a classic locality of Lake Pannon bivalves.— *Acta Geol. Hung.*, 42, 89–108.



- TAMURA, T. (2004): Preservation and grain-size trends of Holocene wave-dominated facies successions in Eastern Japan: implications for high-resolution sequence stratigraphic analysis.– *J. Sediment. Res.*, 74, 718–729. doi: 10.1306/021304740718
- TREVISAN, L. (1967): Pollini fossili del Miocene superiore nei tripoli del Gabbro (Toscana).– *Palaeontographica Ital.*, 32, 1–78.
- VRSALJKO, D. (1999): The Pannonian palaeoecology and biostratigraphy of mollusks from Kostanjek – Medvednica Mt., Croatia.– *Geol. Croat.*, 52, 9–27.
- WEYLAND, H. & PFLUG, H.D. (1957): Die Pflanzenreste der pliozänen Braunkohle von Ptolemais in Nordgriechenland I.– *Palaeontographica B*, 102, 96–109.
- WITTROCK, V.B. (1877): On the development and systematic arrangement of the Pithophoraceae, a new order of algae.– *Nova Acta Regiae Societatis Scientiarum Upsaliensis*, Ser. 3, 1–80.
- WOLFF, H. 1934: Mikrofossilien des Pliozänen Humodils der Grube Freigericht bei Dettingen A. M. und Vergleich mit älteren Schichten des Tertiärs sowie posttertiären Ablagerungen.– *Arb. Inst. Paläobot. und Petr. d. Brenn.*, 5, 55–86.
- XIAO, J., CHANG, Z., FAN, J., ZHOU, L., ZHAI, D., WEN, R. & QIN, X. (2012): The link between grain-size components and depositional processes in a modern clastic lake.– *Sedimentology*, 59, 1050–1062. doi: 10.1111/j.1365-3091.2011.01294.

*Manuscript received April 16, 2013*  
*Revised manuscript accepted May 07, 2013*  
*Available online June 19, 2013*