

## MEGHÍVÓ

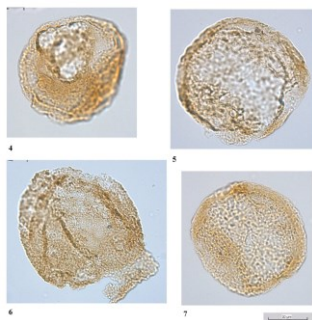
Az MTA–MTM–ELTE Paleontológiai Kutatócsoportja és az MTM Őslénytani és Földtani Tára félig formális, félig kötetlen, házi (de nyilvános) előadás-sorozatának hetvennegyedik előadására

**Wolfram M. KÜRSCHNER:**

**Revisiting the stratigraphic correlation of Triassic-Jurassic boundary interval: New and old concepts**

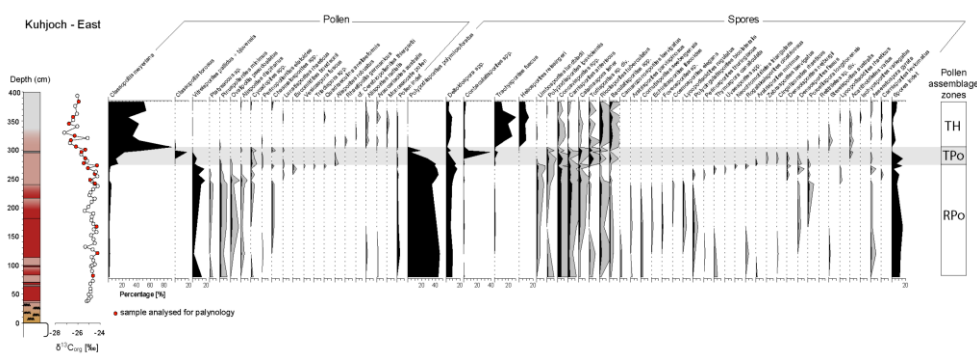
Ideje: 2017. október 16. (hétfő), 14:00

Helye: ELTE TTK Déli épület Koch terem (D 1.108, Pázmány P. 1/C)



The Triassic-Jurassic transition is characterized by enhanced rates of biotic turnover in the marine and terrestrial realms marking the End-Triassic extinction, one of “the Big Five” in Earth’s history. Negative carbon isotope anomalies have been reported that indicate coeval disturbances in the biogeochemical cycles. Multiple negative C-isotope excursions have been reported through the latest Triassic period and independent bio- and/or physical stratigraphy is pivotal to correlate the bio-events associated with the End-Triassic mass

extinction. Recently, Danish-Dutch workers have suggested a revised correlation of the T-J boundary interval between several key sections. In this seminar I will review previous palynological and C-isotope studies starting with the GSSP for the T-J boundary at Kuhjoch and nearby sections in the Northern Calcareous Alps in Austria. I will show new data from T-J sections in the German Triassic basin and correlate them with the British Keuper and the boreal realm and discuss them in the light of the suggested new scenario for the End-Triassic extinction.



Az előadó az Oslo-i Egyetem professzora [www.mn.uio.no/geo/english/people/aca/geolofys/wolframk/](http://www.mn.uio.no/geo/english/people/aca/geolofys/wolframk/)  
Az előadásra minden érdeklődőt szeretettel várunk!